

Alliance for Healthier Communities

Drug Pricing Policy Summit: Patients Redefining Healthcare



Alliance for Healthier Communities
Alliance pour des communautés en santé

November 14, 2018

Executive Summary

The Alliance for Healthier Communities is committed to consistently providing exceptional service and value to its members

The Performance Management/Information Management Program aims is to provide our members with the tools, skills, data insights and support they need to help them **improve the client experience**, improve the delivery of cost-effective services and ultimately improve health outcomes; the Triple Aim

VISION

The best possible health and wellbeing for everyone in Ontario

MISSION

We champion transformative change to improve the health and wellbeing of people and communities facing barriers to health



Community-Governed Comprehensive Primary Health Care

- Alliance membership is unified and organized
- 74 Community Health Centres
- 10 Aboriginal Health Access Centres
- 10 Community Family Health Teams
- 15 Nurse Practitioner-Led Clinics



Alliance for Healthier Communities Strategic Plan: 2015-2020

CHAMPIONING TRANSFORMATIVE CHANGE

In keeping with **OUR VALUES**

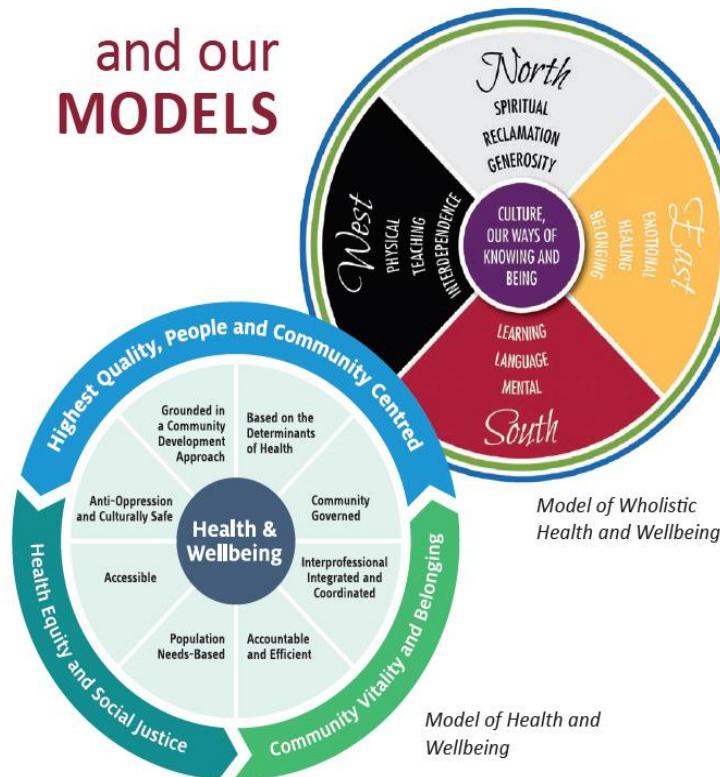
Equity:
We champion an equitable, inclusive and respectful primary health care system.

Leadership:
We challenge the status quo with integrity and transparency and are catalysts for system innovation.

Collaboration:
We embrace community-driven cooperation and partner to influence change.

Knowledge:
We act and learn from a community-informed and evidence-based approach.

and our **MODELS**



to support **OUR MISSION**

We champion transformative change to improve the health and wellbeing of people and communities facing barriers to health.

and achieve **OUR VISION.**

The best possible health and wellbeing for everyone in Ontario.

Models of Health and Wellbeing

Models = Comprehensive Primary Health Care in Action



Ontario's Aboriginal
Health Access Centres
Centres autochtones d'accès
aux soins de santé de l'Ontario

©2015 Ontario's Aboriginal Health Access Centres

Cultural teachings and traditional
practices vary between nations and
regions. All are recognized and respected.
The value systems represented by this
Model of Wholistic Health and Wellbeing
are the common ones that frame the work
of the AHACs toward healthy communities.

- Evidence-based
- CHC/AHAC Board-endorsed
- Evaluation Framework revised to include all aspects of MHWB
- Indicators related to process and outcomes to demonstrate and ensure continued high quality

Information Management Strategy v2.0



ACCESS

CONNECT

INFORM

PROTECT

7





Value Realization

- 37.5% more advanced use of the EMR
- Improved clinical performance through BI tools
- 7-fold increase in community development programs documented
- 27% more complex clients served
- ER use is 20% less than expected
- 20 Safe Consumption Services reduces deaths
- 30 Social Prescribing projects underway
- High client satisfaction

Types de soins primaires:
MD, IP, IAA, IA, and AM

Types de rencontre:
En personne, au telephone
et tiers



Guide de référence
Ressources

Période

- ☒ 12 derniers mois

Tout sélectionner Tout désélectionner

Types de pourvoyeur

- ☒ Consultant médecine générale
☐ Infirmière praticienne
☐ Infirmière
☒ Autre
☐ Non défini

Tout sélectionner Tout désélectionner

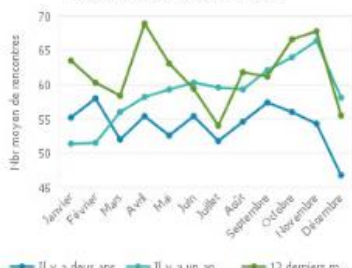
Rafraîchir les graphiques

Pourvoyeur

- ☐ [Introduction](#)
- ☐ [The Internet](#)
- ☐ [The Web](#)
- ☐ [The Cloud](#)
- ☐ [The Future](#)
- ☐ [The End](#)
- ☐ [The Beginning](#)
- ☐ [The Middle](#)
- ☐ [The Conclusion](#)

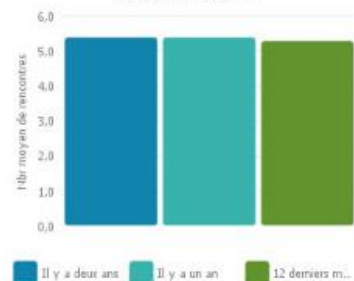
Tout sélectionner Tout désélectionner

Moyenne des rencontres quotidiennes de soins
primaires par mois – Centre



Rapport de rencontres

**Moyenne des rencontres annuelles de soins
primaires - Client**



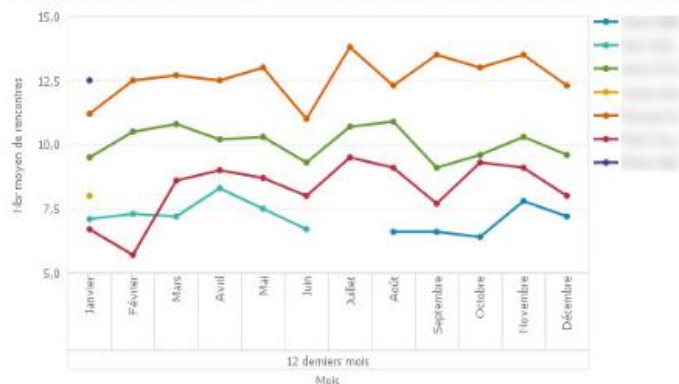
Clients ayant de fréquentes rencontres de soins
primaires - Centre



Clients ayant des maladies chroniques multiples/coûteuses (Maillon santé) – Centre

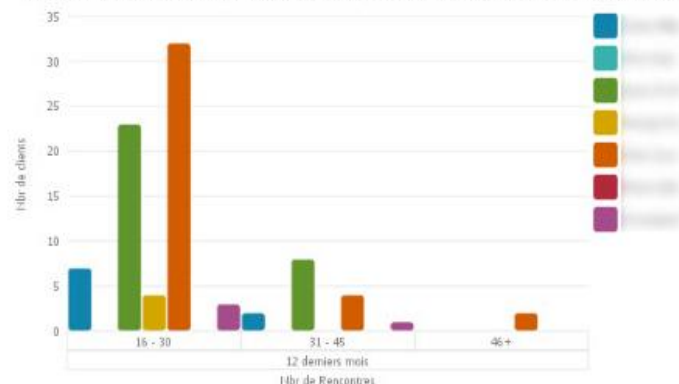


Moyenne des rencontres quotidiennes de soins primaires par mois – Pourvoyeur de soins primaires



Rapport de rencontres

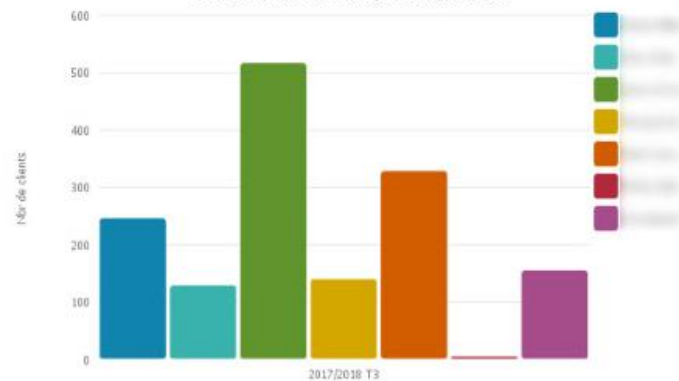
Clients ayant de fréquentes rencontres de soins primaires – Pourvoyeur responsable



Choisir le pourvoyeur pour le rapport client ▼

Rapport clients

Total du client - Pourvoyeur responsable

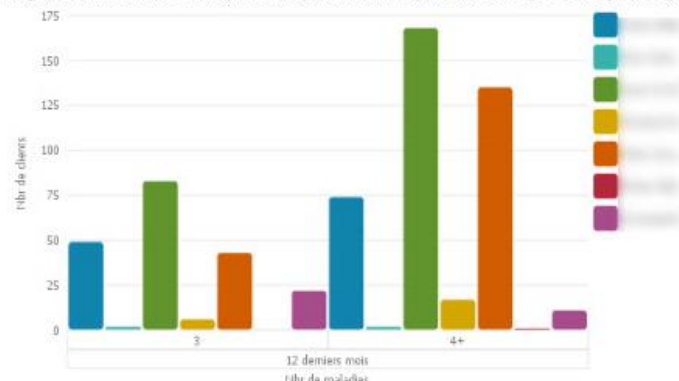


Pourvoveur sélectionné pour le rapport client:	Aucun
--	-------

»»

Rapport clients

Clients ayant des maladies chroniques multiples/coûteuses (Maillon santé) - Pourvoyeur responsable



Pourvoveur sélectionné pour le rapport client: **Aucun**

»

Rapport clients

The dashboards and reports within BIRT are visualizing the millions of service interactions, making quality improvement opportunities obvious, and service enhancements evident to clinicians, teams, and decision-makers

Dashboards are available in both official languages

Discussion and Q&A

Thank you/Merci/Miigwetch



The background features a central grey circle surrounded by eight overlapping, petal-like shapes in various colors: red, green, teal, yellow, and light blue. The petals are arranged in a circular pattern, creating a layered effect. The word "Appendix" is centered within the grey circle.

Appendix



Alliance Membership Criteria

- Deliver interprofessional primary health care – primary care services in combination with health promotion and community development activities that address all factors impacting health and improve life in the places where people live, work and play;
- Apply community-centred approach to service delivery that incorporates the voice of the community in decision-making, with community governance as its core pillar;
- Support the Alliance’s mission, vision and values;
- Endorse the Health Equity Charter;
- Endorse the Model of Health and Wellbeing or Model of Wholistic Health and Wellbeing as applicable;
- Be incorporated as a not-for-profit organization or be recognized by the Federal Government as a First Nations Government;
- Operate in Ontario; and
- Receive funding for its primary care services from the Ontario government or Federal Government for Indigenous organizations.

Research programs by the Numbers



14

Primary health care research initiatives



20

External studies including opt-in data from our members

23

National & International conferences & presentations



50+

Collaborators from academia, primary care, & public health



6

Peer-reviewed articles in national and international journals





Primary Research Projects

Advancing Access to Team-Based Care (AA-TBC; variable start dates) Principal Investigators: Jen Rayner - Research & Evaluation Lead, Alliance for Healthier Communities; Walter Wodchis - Professor, IHPME at UofT.

An Evaluation of Community Development Initiatives in Ontario Community Health Centres (April, 2018). Robert A. Case - Professor, University of Waterloo.; Jen Rayner - Research & Evaluation Lead, Alliance for Healthier Communities.

Optimizing Canada's Healthcare for Refugees (April, 2018). Principal Investigators: Astrid Guttman - Chief Science Officer, ICES; Richard Glazier - Primary Care Program Leader, ICES; Jen Rayner - Research & Evaluation Lead, Alliance for Healthier Communities.

Learning Health System for Ontario Primary Care (LeHSOn-PC; Jan., 2018). Principal Investigators: Merrick Zwarenstein - Professor, Family Medicine, Western University; Jen Rayner - Research and Evaluation Lead, Alliance for Healthier Communities.

Social Prescribing: Connecting People, Health and Community (June, 2018). Principal Investigator: Jen Rayner - Research & Evaluation Lead, Alliance for Healthier Communities

Social Isolation Tool (Aug., 2017). Principal Investigator: Jen Rayner - Research and Evaluation Lead, Alliance for Healthier Communities.

Count Everyone (May, 2017). Principal Investigator: Jen Rayner - Research & Evaluation Lead, Alliance for Healthier Communities

Justice Perceptions of Family Physicians & Nurse Practitioners on Community-Governed Interprofessional Teams - Phase 2 (July, 2016). Principal Investigators: Laura Muldoon - Physician, Somerset West CHC; Jen Rayner - Research and Evaluation Lead, Alliance for Healthier Communities.

Costing Study (??). Principal Investigators: Jen Rayner - Research and Evaluation Lead, Alliance for Healthier Communities; Walter Wodchis - Professor, IHPME at UofT.



Embedded report – double click to open